



Turn to the Experts™

i-Vu CCN Standard & Plus

Compact. Powerful. Intuitive. Just a few words that describe Carrier's new state-of-the-art web appliance, i-Vu. Packed full of standard features, i-Vu offers total control of your Carrier system from anywhere in the world using a standard web browser. With i-Vu, it's simple to accomplish all of the essential building management functions. View system status easily through dynamic equipment graphics and floor plans. Set and view schedules and setpoints using superb graphical controls. Stay informed of important building conditions through i-Vu's powerful trending and alarming capabilities. And with i-Vu CCN Plus, you get the added features of advanced reporting, seamless integration with other systems, and tenant override billing. Managing your entire facility through a single web-based interface has never been easier!

Standard Features and Benefits

- Compact, lightweight, and fully compatible with all Carrier Comfort Network (CCN) systems
- View and control your Carrier system from anywhere in the world using a standard web browser or WAP-enabled device
- Robust user interface offers dynamic comfort indicators on floor plans and real-time, interactive equipment graphics
- Automatic trending provides a clear history of important building conditions
- Graphically set, change, and view system schedules and setpoints
- Investigate and troubleshoot system problems with ease using i-Vu's intuitive alarm viewer
- Standard reports for audit log, effective schedules, and equipment checkout
- Advanced Password Policy and Secure Sockets Layer (SSL) communications, providing 128-bit encryption for added security



Plus Features and Benefits

- All Standard features and benefits
- Scalable for larger CCN systems
- Advanced reporting allows you to quickly examine and compare equipment values or trends
- Integration capabilities allow you to manage the equipment that compliments your Carrier system, such as lighting, boilers, fire, and security
- Built-in tenant override billing reports allow you to monitor, store, and bill tenants for after-hours energy usage

Details

State-of-the-Art Graphics

i-Vu's superb floor plan graphics display the status of multiple zones from a single view. Dynamic color ovals are provided as a standard means for providing a visual representation of the comfort level in each zone. Temperature values, zone names, and links to zones are automatically created for ease of navigation. In addition, i-Vu's animated, interactive, and intuitive equipment graphics are just part of the package. Adjust setpoints via editable fields and graphical controls directly on the graphic. Real-time status values are updated regularly without having to refresh the page.

Flexible Scheduling

i-Vu's superior scheduling interface is both graphical and hierarchical in nature. Define or view occupied, unoccupied, holiday or override schedules by simply pointing and clicking on an area or piece of equipment in the navigation tree. Schedule groups can be defined for added flexibility.

Alarm Management

i-Vu's powerful alarming capabilities allow you to see alarm events in your entire system from a single screen. View, acknowledge, print, or delete alarms with ease. Send an e-mail, print, play an audio file, or pop-up a message when an alarm occurs. Alarms are easily sorted by date, type, or incident, allowing you to respond quickly to critical alarms while filtering out nuisance alarms.

Historical Trending

i-Vu's automatic trending capabilities mean that a history of your equipment's operation is being saved every 20 minutes without any special setup. Trends can be easily modified to sample at a different interval or on change of value instead. Generate trend graphs for individual points, or view multiple points on one graph. Copy trend data from the graph and paste it into Excel. With i-Vu's extensive trend capabilities, troubleshooting your system has never been easier.

Integration

i-Vu's seamless integration capabilities allow you to tie in ancillary devices that compliment your Carrier system. i-Vu supports the most popular open protocols in use today... BACnet, Modbus, and LonWorks. So whether you need to integrate to the systems that you already have in place, or the systems that you'll acquire in the future, you'll be able to manage all of them through i-Vu.

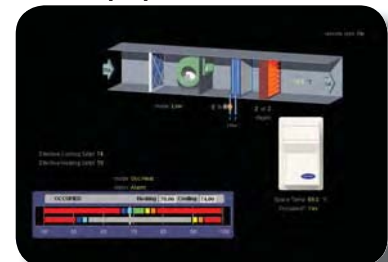
Tenant Billing

Built-in tenant billing reports allow you to monitor, store, and bill tenants for after-hours energy consumption. This after-hours energy consumption is based on override events that can be initiated by the tenant inside of their controlled space. Each override event is captured by the Tenant Billing application, allowing the building owner to invoice the tenant for their energy usage during that time period. As a result, after-hours energy costs are easily tracked and distributed to the tenants in your facility.

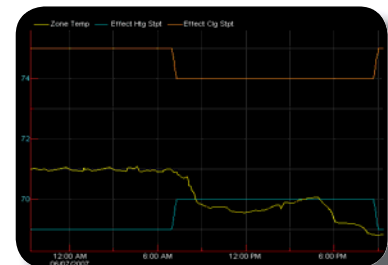
Floor Plan Views



Equipment Views



Historical Trending



Integration



Manufacturer reserves the right to discontinue, or change at any time, specifications or designs, without notice or without incurring obligations.

CARRIER CORPORATION ©2008

A member of the United Technologies Corporation family. Stock symbol UTX. 11-808-370-01 05/08

www.carrier.com
1-800-CARRIER



Turn to the Experts.